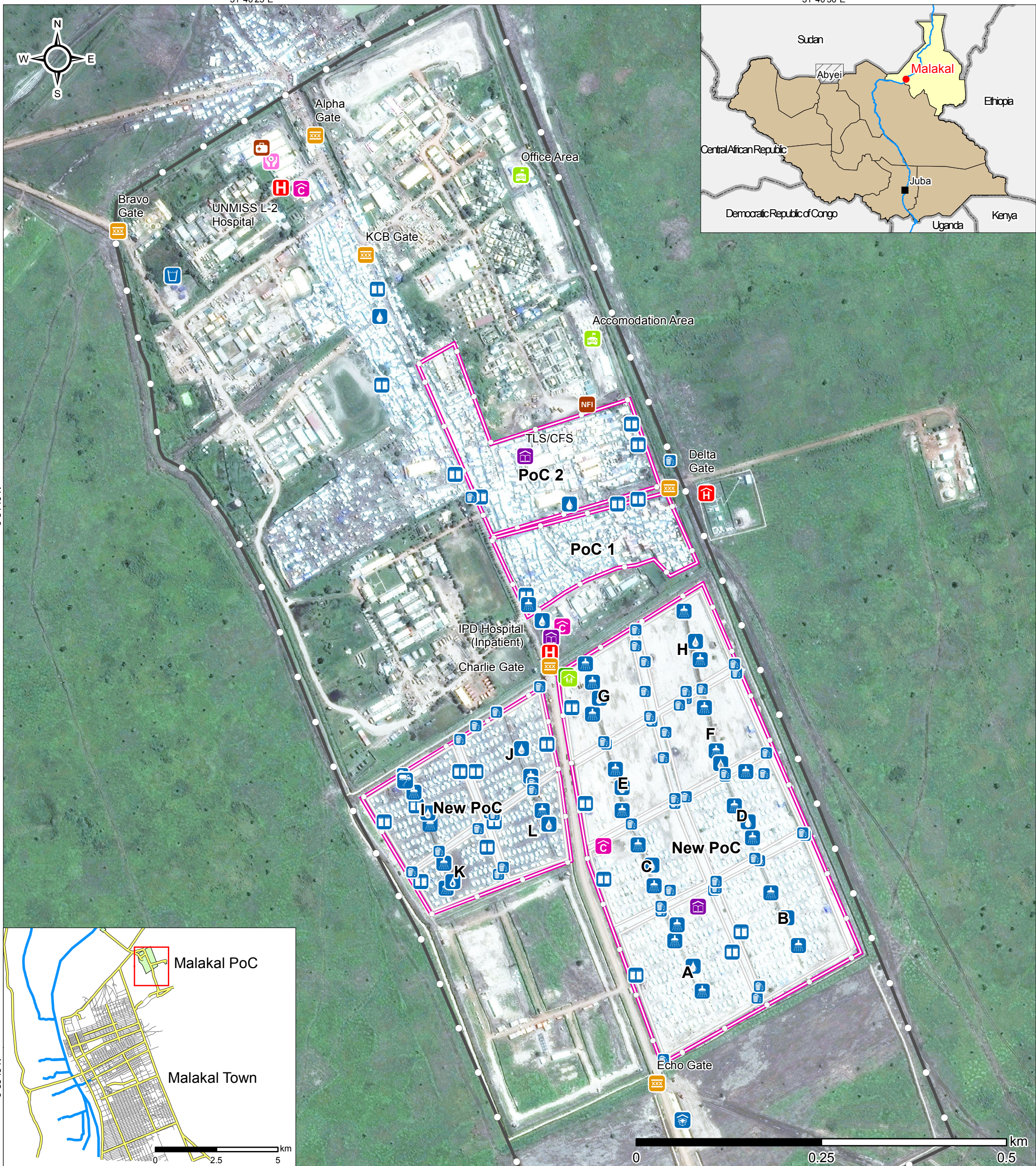


31°40'25"E

31°40'50"E

9°34'10"N

9°33'45"N



Health Facilities	WASH Facilities	Humanitarian Coordination	PoC Structure	
Hospital	Water Point	Distribution Site	New PoC Site Sections	<p>A product of REACH Map production: ACTED Satellite imagery and analysis: UNOSAT Image copyright: DigitalGlobe, 19.06.2014 Imagery provided by: U.S. Department of State, Humanitarian Information Unit, NextView License Site facilities: DRC ; Roads, buildings: Open Street Map</p> <p>Coordinate System: GCS WGS 1984 File: reach_ssd_malakal poc_30oct2014_a3p_v3 Contact: reach.mapping@impact-initiatives.org</p> <p>Note: Data, designations and boundaries contained on this map are not warranted to be error-free and do not imply acceptance by the REACH partners, associated, donors mentioned on this map.</p>
Cholera Treatment Center	Bathing Facilities	Camp Management Office	PoC Boundaries	
OPD Clinic (Outpatient)	Latrines	Humanitarian Hub	UNMISS Base Fence	
Protection / Education	Garbage Collection Pt.	Log Base - WASH/Medical		
Temporary Shelter GBV Survivors	Water Storage	Log Base - WASH/NFIs		
TLS/CFS	Water Treatment Plant	Internews Tent		<p>Funded by:</p> <p>Humanitarian Aid and Civil Protection</p>
		UNMISS Gate		