

# PMT Mogadishu Monthly Dashboard

Total Displacements from Mogadishu

16,500

Leaving Mogadishu

2,600

To Areas Within Mogadishu

13,900

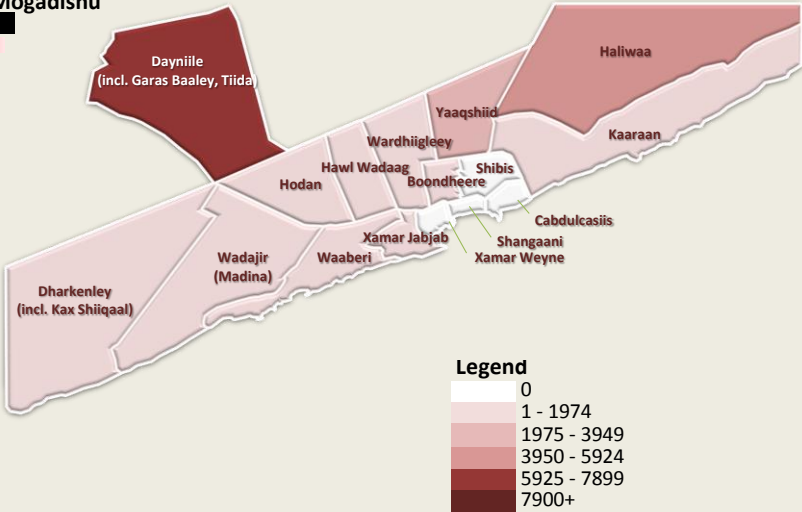
Total Displacements Nationwide

40,800

October, 2011

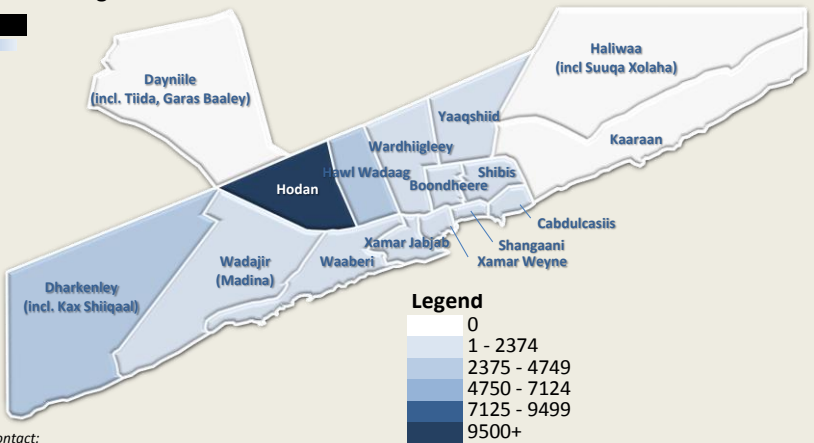
## Displacements within Mogadishu

District	Displacement
Dayniile	7,860
Haliwaa	5,070
Yaaqshiid	2,720
Wadajir	370
Banadir	160
Kaaraan	70
Hodan	60
Hawl Wadaag	50
Wardhiigley	40
Dharkenley	30
Boondheere	30
Waaberi	30
Xamar Jabjab	10
Cabdulcasii	0
Shangaani	0
Shibis	0
Xamar Weyne	0

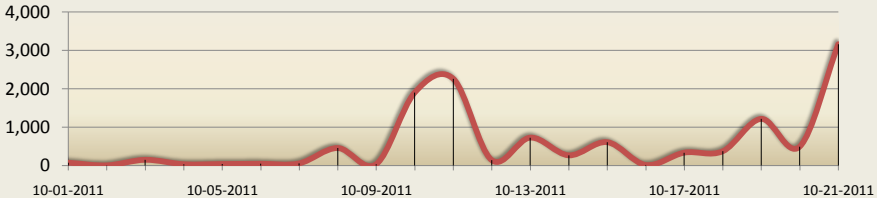


## Areas Receiving IDPs within Mogadishu

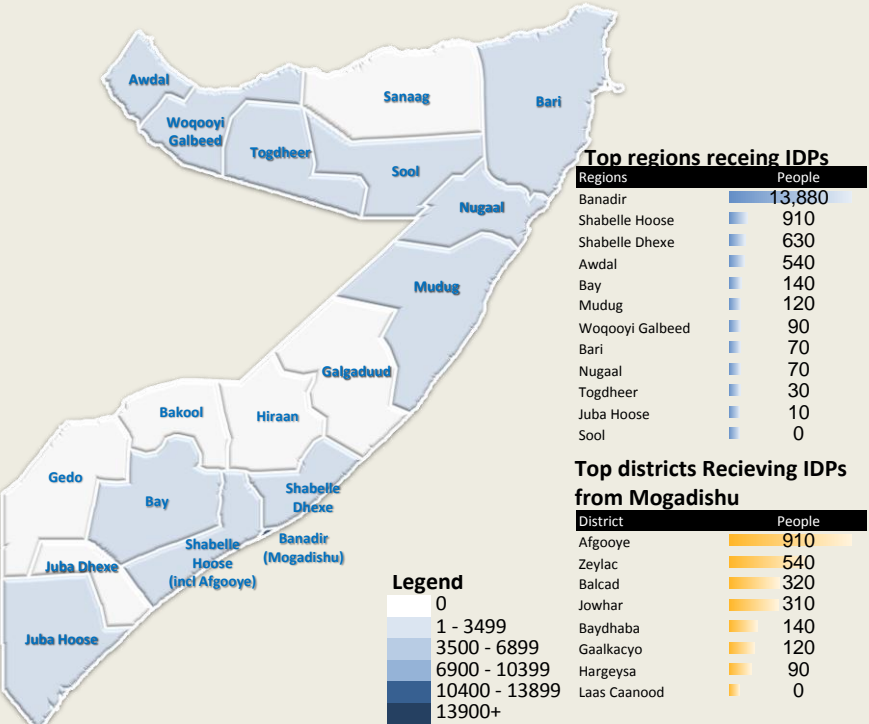
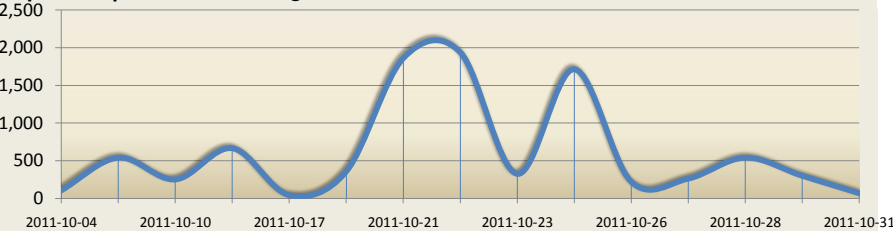
District	People
Hodan	9,520
Hawl Wadaag	3,200
Dharkenley	2,990
Boondheere	2,240
Waaberi	1,390
Shibis	1,030
Wardhiigley	600
Wadajir	420
Xamar Weyne	380
Banadir	360
Cabdulcasii	320
Yaaqshiid	320
Shangaani	240
Xamar Jabjab	70
Dayniile	0
Haliwaa	0
Kaaraan	0



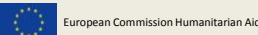
## Graph of displacements from Mogadishu



## Graph of displacements to Mogadishu



PMT/PMN is funded by:



For more information, contact:  
Andreas Needham - PI Officer/Executive Assistant - [needham@unhcr.org](mailto:needham@unhcr.org)  
Matthew Smawfield - Operations Data Manager - [smawfield@unhcr.org](mailto:smawfield@unhcr.org)

Data on displacement is obtained from the IASC Somalia Population Movement Tracking system